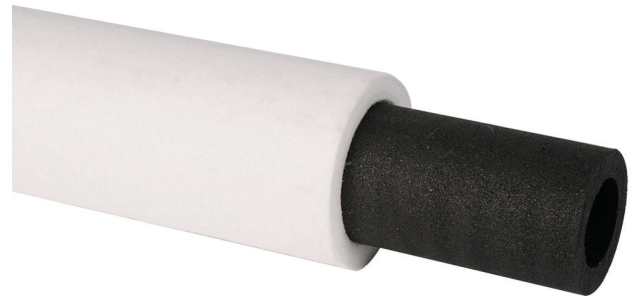


## Description

CARBOFILTER DUO was designed to optimize filtration stages , it is placed uphill from an extruded carbon cartridge in order to enhance the reduction of a pollutant (chlorine) or downhill from a thermowelded cartridge in order to create a finer filtration.

CARBOFILTER DUO is used for residential applications under a sink or uphill from a purification device (osmosis unit,UF...) and specific purification processes (surface treatment, deodorizing...)



## Features & Advantages

- Nominal prefiltration at 5µm
- Adsorption on GAC extruded compacted carbon
- Coconut carbon
- Available on request with 3,7, and 8 fittings
- Length from 10" to 30"

## Dimensions

Outer diameter	63 mm
Inner diameter	28 mm
Length	10" up to 30"

## Technical features

<b>Max temperature</b>	65°C
<b>Flowrate</b>	from 250L/h up to 300L/h max / 9"3/4
<b>Pressure drop</b>	Initial DeltaP at 3,8L/min or 240L/h 250 mbars by 10
<b>Max differential pressure</b>	3.4 bars at 50°C

## Reference order

REFERENCE QCD - 05 - 20  
Tab 1 Tab 2

Table 1 : prefiltration

Code	Description
05	5 µm

Table 2 : length

Code	Description
10	10 " = 254 mm
20	20 " = 508 mm
30	30 " = 762 mm